

Channelling

As part of the Wykamol cavity drain membrane system, channels are a crucial part of the overall system, and are laid at wall floor junctions to remove any water entering the structure.



These channels are designed with pre-determined water entry points into the rear of the channel.

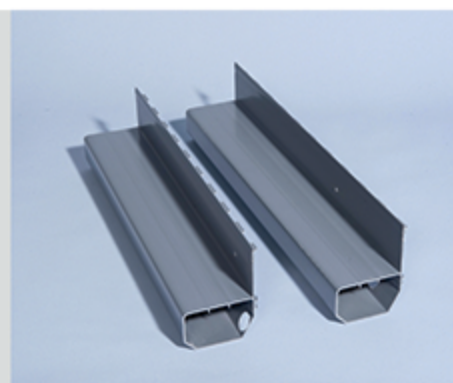
They either come with a flange upstand system or flangeless, depending on the type of foundation that you will be working with.

Channels come with various accessories to aid the system, some of which are covered in the next two pages.



Waterguard

Wykamol Waterguard is a PVC drainage conduit designed for the control of water ingress in below ground situations. Wykamol Waterguard is fitted around the perimeter of the floor at the vulnerable wall/floor junction.



Floor Drain

Floor Drain is a flangeless channel similar to Waterguard, for controlling water movement to a sump chamber or drain. It has the benefits of no upstand which is ideal where stepped foundation footings would cause a problem. The channel can also be used to drain across a floor centrally.

