

Waterguard Drainage outlet

The drainage outlet can be used to get water from the channels to the sump chamber or existing drain. The angle bend on the underside of the channel takes water through a 32mm connection.



Universal Channel outlet

Newly designed channel outlet to remove water from the channel to the sump.

This has the benefit of a 100mm outlet for high water movement or for easier installation into the sump chamber.

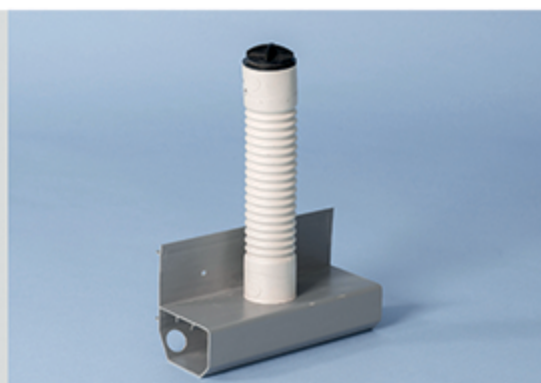
It also comes with a jetting eye which can be cut down to suit floor finishes. Can be used with floor drain and waterguard channels.



Flexi Jetting Eye

The flexible jetting eye has been designed to allow cleaning of the channel system and also as an inspection port.

The unique flexible upstand jetting point can be easily bent to allow the channel to be used in a wall port system. It and also has the benefit of allowing slabs to be laid whilst still being easily accessible afterwards.



Waterguard Drain End Left or Right

The drain end connector can be used to take water away through an external wall to lower level drainage, ideal for houses built into a hill side where lower drainage is possible. This comes with either a left return or right return depending on where it is to be sited.

