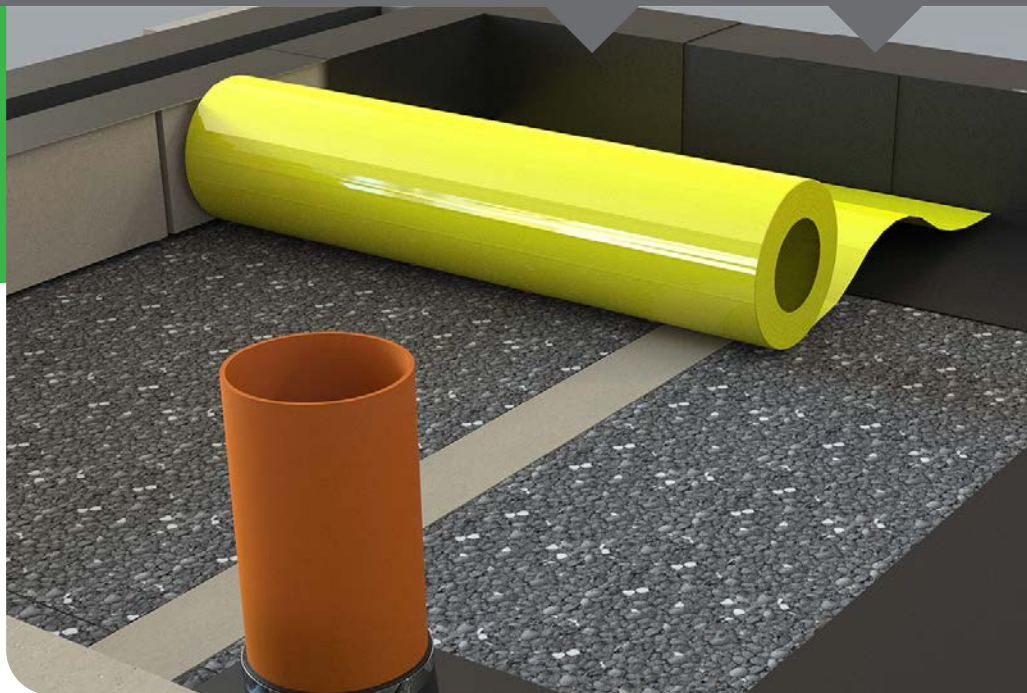
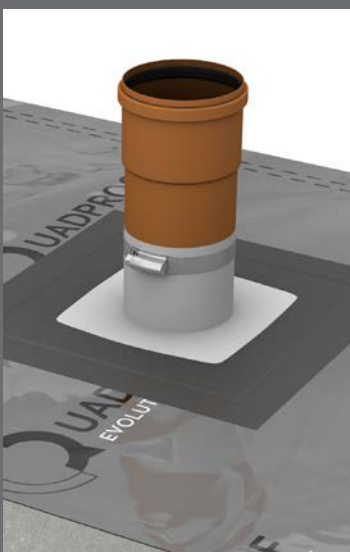
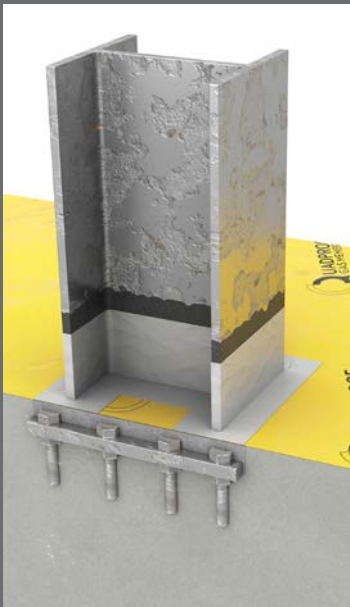


QUADPROOF GAS MEMBRANE

Gas barrier membrane

A monolithic hybrid co-polymer barrier giving excellent performance. Fully tested for Radon, Methane and CO2.



Quadproof Gas Membrane is a low permeability, highly robust monolithic thermoplastic LOPE membrane for use as a Radon, CO2 and low level Methane barrier.

The barrier provides a safe solution for use in the construction of buildings and dwellings when installed according to the relevant code of practice. The product is coloured yellow and is centre folded to minimise creasing under screeds and for ease of handling on site. The product has excellent strength and puncture resistance. Primarily designed to meet the requirements of NHBC characteristic Amber 1 (gas contaminated land)

Quadproof Gas Membrane offers a complete solution for the protection of buildings and occupiers from Radon, Carbon Dioxide and low levels of Methane, including gas found on disused coalfield sites. Other sites such as disused landfill and industrially contaminated land will commonly require the protection of a gas barrier to protect buildings from gas ingress.

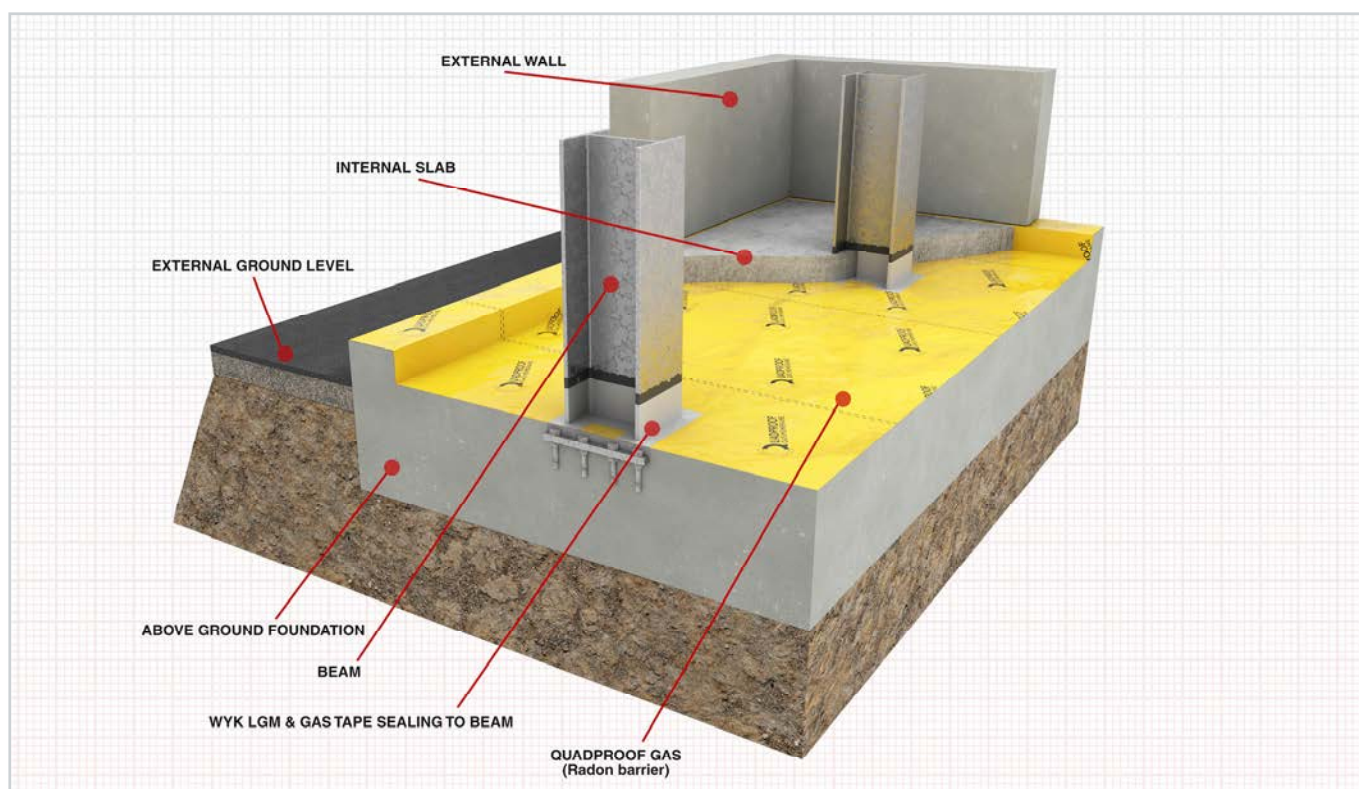
The membrane will also provide an effective damp proof membrane for the dwelling but is not intended to guard against situations where hydrostatic pressure is present. Fully complies with the recommendations of the Building Research Establishment Document: 414 and with reference to the requirements of the NHBC Guidance on Methane and Carbon Dioxide report edition no: 4.

TYPICAL USES

- Approved by NSA (IAB)
- Exceeds the requirements of BRE211.
- Complies with NHBC Amber 1 installations.
- CS2 dependant on construction type.

TECHNICAL DATASHEET

Property	Test Method	Data
Weight		356g/m ²
Thickness		375µm
Tensile Strength	MD	21.5MPa
	CD	29.4MPa
Elongation	MD & CD	>800%
Dart Impact Strength		1.012kg
Tear Resistance	MD	248N/mm
	CD	303N/mm
Low Temperature Flexibility		-25°C
Radon Permeability		4x10 ⁻¹² m ² /s
C0 ² Transmittance		26.53cc/m ² hr
Methane Transmittance		6.43cc/m ² /hr
MVTR		0.16g/m ² /day
Standard Roll Width		4m
Standard Roll Length		20,25m
Standard Roll Weight		28.48 - 35.60kg



QUADPROOF GAS MEMBRANE

ANCILLARY COMPONENTS

Joint Strip

A butyl modified reinforced double sided bitumen tape, 1.5mm thick, designed to form a gas tight gasket. Excellent adhesion and tolerance to damp conditions.

Colour: black.

Available in: 50mm x 15m rolls, 100mm x 15m rolls

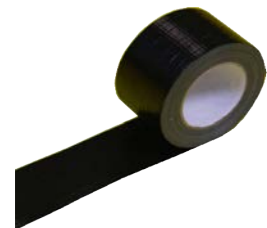


Girth Tape

A single sided girth tape used to secure and protect linear joints. Excellent adhesion, dimensionally stable and water resistant.

Colour: black.

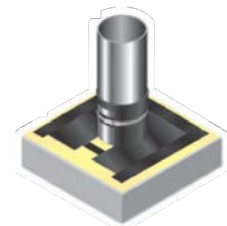
Available in: 72mm x 50m rolls.



Top Hats

A pre-formed pipe seal complete with stainless steel jubilee clip. Easily fixed and sealed on site.

Size range from 50mm to 200mm.



Radon Sump Units

The Radoncare Sump and Cavity Gas Vent System is manufactured by a rotational moulding process from heavy duty polyethylene. The sump is constructed with a solid roof and base and is provided with 40mm diameter holes in the walls. Spigots for 100mm pipe connections are provided at each end of the sump, but are blanked off with knock outs to allow choice of direction for extract pipe. The cavity gas vent comes with a detachable polyethylene cap, which can be easily removed if an extraction system has to be attached.



Useful References

The Building Regulations Approved Document Part C 2004, CP 102: 1973 code of practice for the protection of buildings against water from the ground.

- BR211 "Radon - Guidance on protective measures for new buildings"
- BRE414 "Protective measures for housing on gas-contaminated land"
- CIRIA 665 Ground gas handbook 2009
- CIRIA C748 Guidance on the use of plastic membranes as VOC vapour barriers
- BS8485:2015 Code of Practice for the Characterization and Remediation from Ground Gas in Affected
- Developments NHBC "Guidance on methane and carbon dioxide" and technical extra April 2016, issue 20.

STORAGE & SHELF LIFE

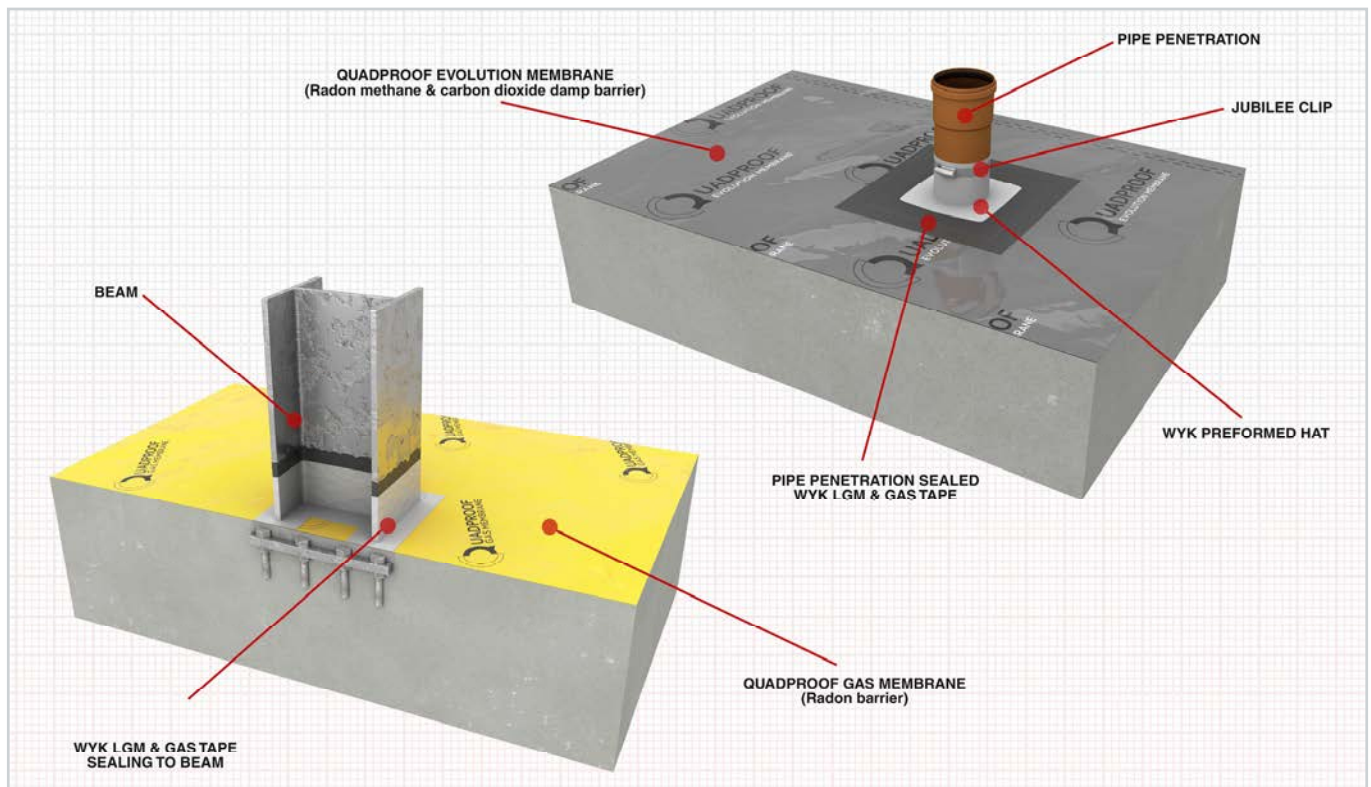
Store in an upright position, under cover and away from high temperatures and open flames. Shelf life is the lifetime of the structure, when stored and installed in line with the datasheet recommendations.

HEALTH AND SAFETY

No specific hazards are likely to arise while using any Wykamol Waterproofing Membranes or ancillaries; neither are classified as hazardous in respect to CHIP II Regulations 1999.

However, general precaution should be exercised in the use of drill etc. taking particular note of the special risk associated with working in confined spaces (basements) with restricted access/egress.

The Wykamol Group always advise the use of appropriate PPE, including gloves, hard hat, goggles, high visibility jackets and steel toe cap boots. For further information and advice, please contact the Wykamol Group Technical Department.



Boran Court, Network 65 Business Park, Hapton,
Burnley Lancashire BB11 5TH
t: +44 (0)1282 473 100 e: info@wykamol.com
www.wykamol.com

Unit 3-5 Crayford Commercial Centre,
Greyhound Way, Kent, DA1 4HF
t: +44 (0)1322 318 830 e: info@tritonsystems.co.uk
www.tritonsystems.co.uk

The information in this technical datasheet is given in good faith and was correct at the time of publication, but does not purport to be all inclusive. We reserve the right to update this information at any time without prior notice. All data is obtained through extensive testing in stringent laboratory conditions, however as we have no control over site conditions or work executed we accept no liability for incidental and/or consequential property damage arising out of the use of this product. The Wykamol Group's standard terms and conditions of sale apply.