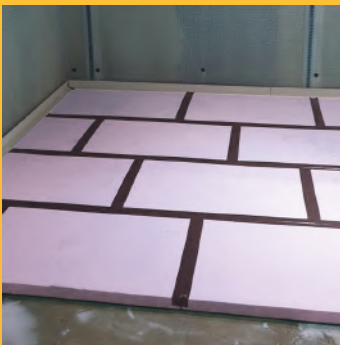


HIGH LOAD Thermal Spacer

Wykamol HIGH LOAD Thermal spacer has been specifically developed to assist in the installation of internal waterproofing systems for basement structures.



This high compressive strength material **500KPa** has a very impressive long-term compressive creep property of $225\text{KN}/\text{m}^2$, meaning that even after 50 years the material will only compress by 2% if it is loaded at $225\text{KN}/\text{m}^2$.

ADVANTAGES

- The high load spacer can also be used as a protection board for Wykamol external type A waterproofing systems. Applied externally, the board offers protection, insulation and drainage.
- The Wykamol high load thermal insulation boards have been developed to be installed above the concrete basement floor slab and under the floor screed. The boards are 50mm thick so can be installed to create an insulated drainage layer that finishes flush with the internal perimeter drainage gully.
- The boards are grooved on one surface, 6mm x 6mm at 25mm spacing, to assist with drainage.
- The edges of the boards have a shiplap profile to minimise the risk of screed passing through any gaps between the boards that may exist following installation.

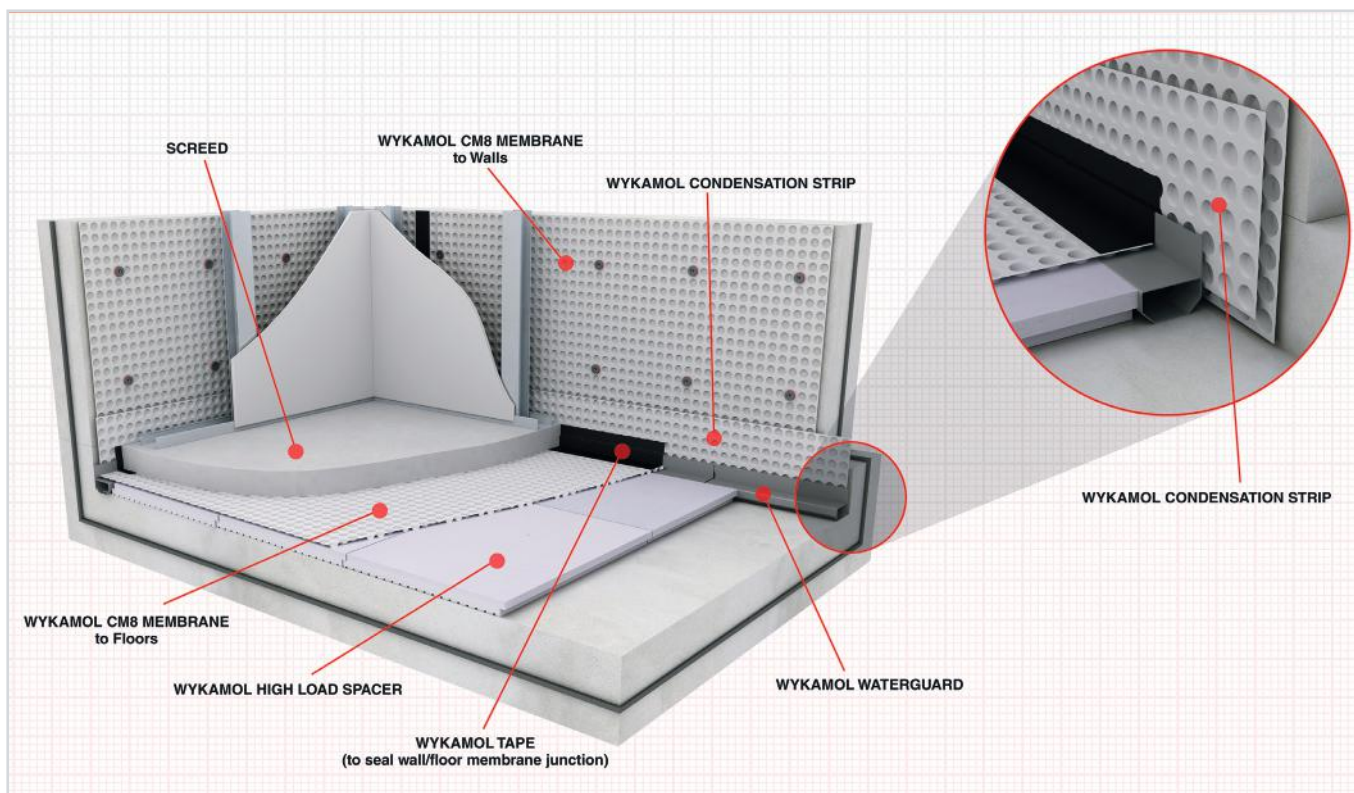
UNIQUE BENEFITS

Does not absorb water, Breathable, High compression resistance, Lasting performance, Quick and simple installation, 100% Recyclable.

TECHNICAL DATASHEET

Thickness (mm)	Nominal Area (mm)	Effective Area (mm)	Edge Treatment
50	1200 x 600	1185 x 585	15mm Shiplap Edge

Property	Standard	Unit	Value
Compressive Stress at 10% deformation	EN826	KN/M ²	500
Compressive creep (50 years @ 2% deformation)	EN12087	KN/M ²	225
Design Thermal Conductivity	EN10456	W/mK	0.034
Long term Water absorption by total immersion	EN12091	%VOL	<1
Coefficient of Thermal Expansion	-	mm/mK	0.07
Maximum Working Temperature	-	°C	75



Unit 3, Boran Court, Network 65 Business Park, Hapton, Burnley Lancashire BB11 5TH
 t: +44 (0)845 4006666 f: +44 (0)845 4003333
 www.wykamol.com e: info@wykamol.com

The information in this technical datasheet is given in good faith and was correct at the time of publication, but does not purport to be all inclusive. We reserve the right to update this information at any time without prior notice. All data is obtained through extensive testing in stringent laboratory conditions, however as we have no control over site conditions or work executed we accept no liability for incidental and/or consequential property damage arising out of the use of this product. The Wykamol Group's standard terms and conditions of sale apply.