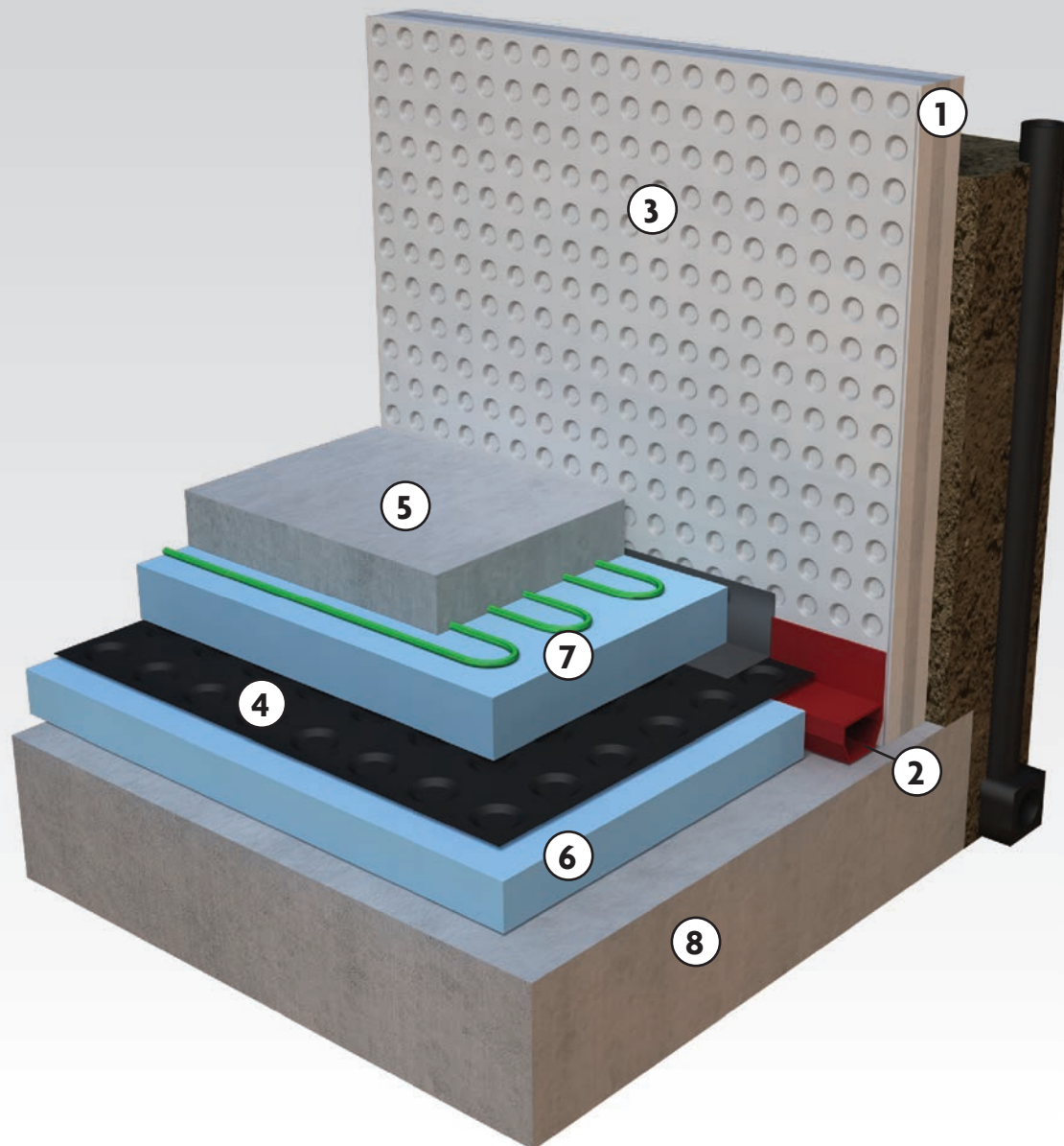


Section Detail Bespoke ICF Internal System

- 1 ICF Retaining Wall
- 2 Perimeter Channel
- 3 Cavity Drain Membrane Walls
(Wykamol CM8, Kontract Mesh or Slimline Mesh)
- 4 Cavity Drain Membrane Floors
(Wykamol CM8 or CM20)
- 5 Screed
Minimum 65mm Thickness
- 6 Insulation
- 7 Insulation & Under Floor Heating
- 8 Concrete Base Slab
Minimum 65mm Thickness



Wykamol ICF
Drawing Detail WYK010Z

NOT TO SCALE

Wykamol Group
www.wykamol.com
0845 400 6666

Wykamol
GROUP LIMITED